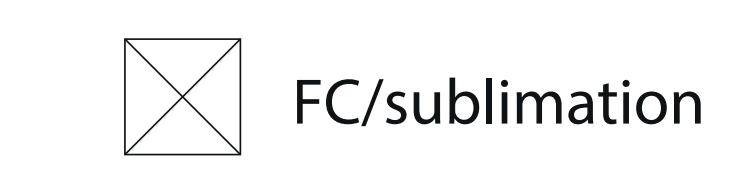


BottleBag Pack City (Deutsch)

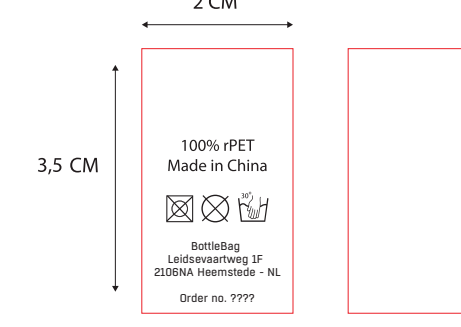
Print colour



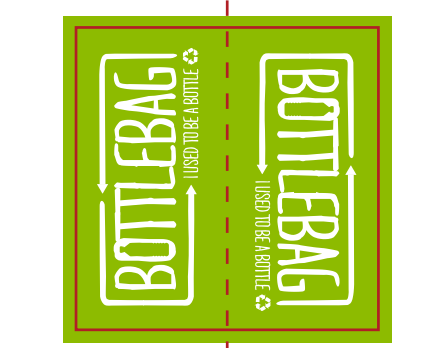
Side label colours:



Care label
(inside)
2x3,5 cm



Woven side label



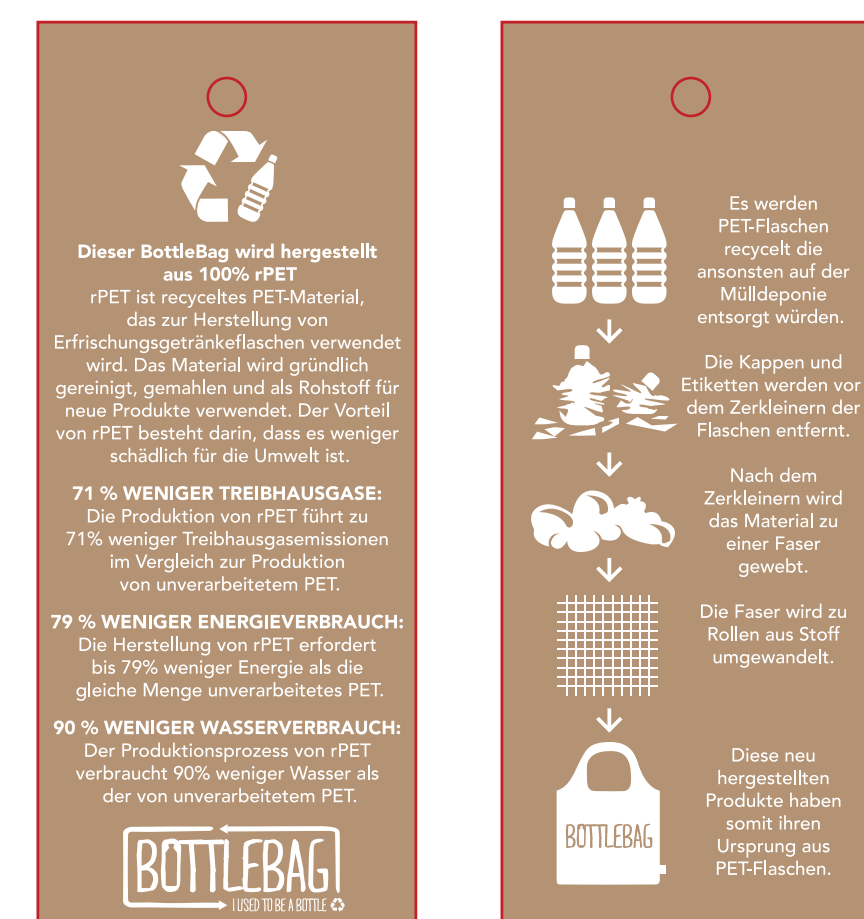
54,5 cm

45,5 cm

Material Hangtag BottleBag



Hangtag BottleBag
Size 5x12 cm



A: Tolerance of placing graphics on the bottlebag is +/- 10 mm.
 B: We are not able to match Pantone color on CMYK artwork.
 C: Minimum readable size of fonts is 8 pt.
 D: Physical sample for approval is possible with acceptance of surcharge of € 50,00
 E: We are not able to match Pantone color on woven side label.
 F: Size of the bag will be 45 cm x 68 cm when assembled.

34,5cm
Back

34,5cm
Front

78 cm

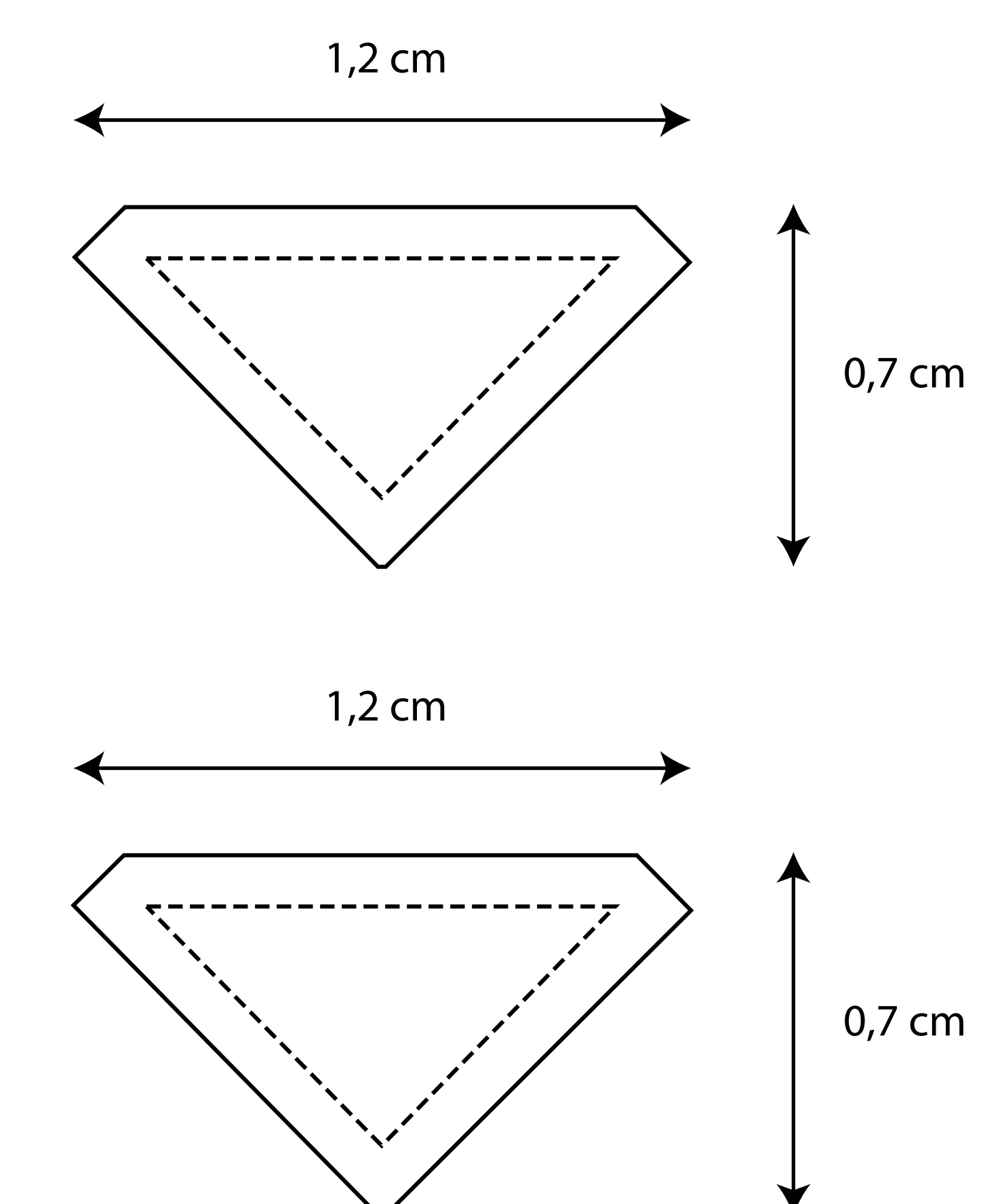
10 cm

7,8 cm

78,5 cm

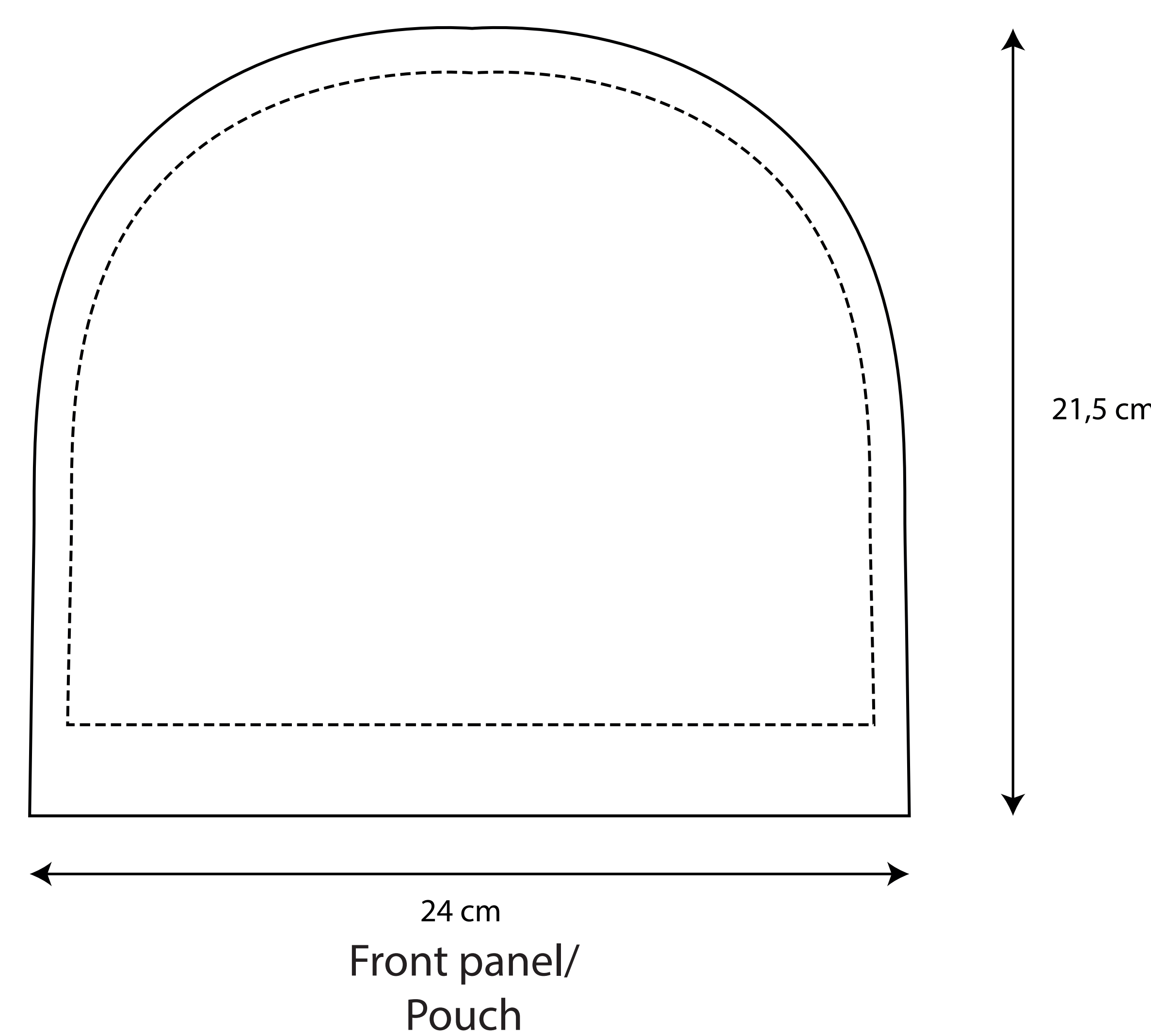
Top panel

18 cm



14,5 cm

Side panel



24 cm
Front panel/
Pouch