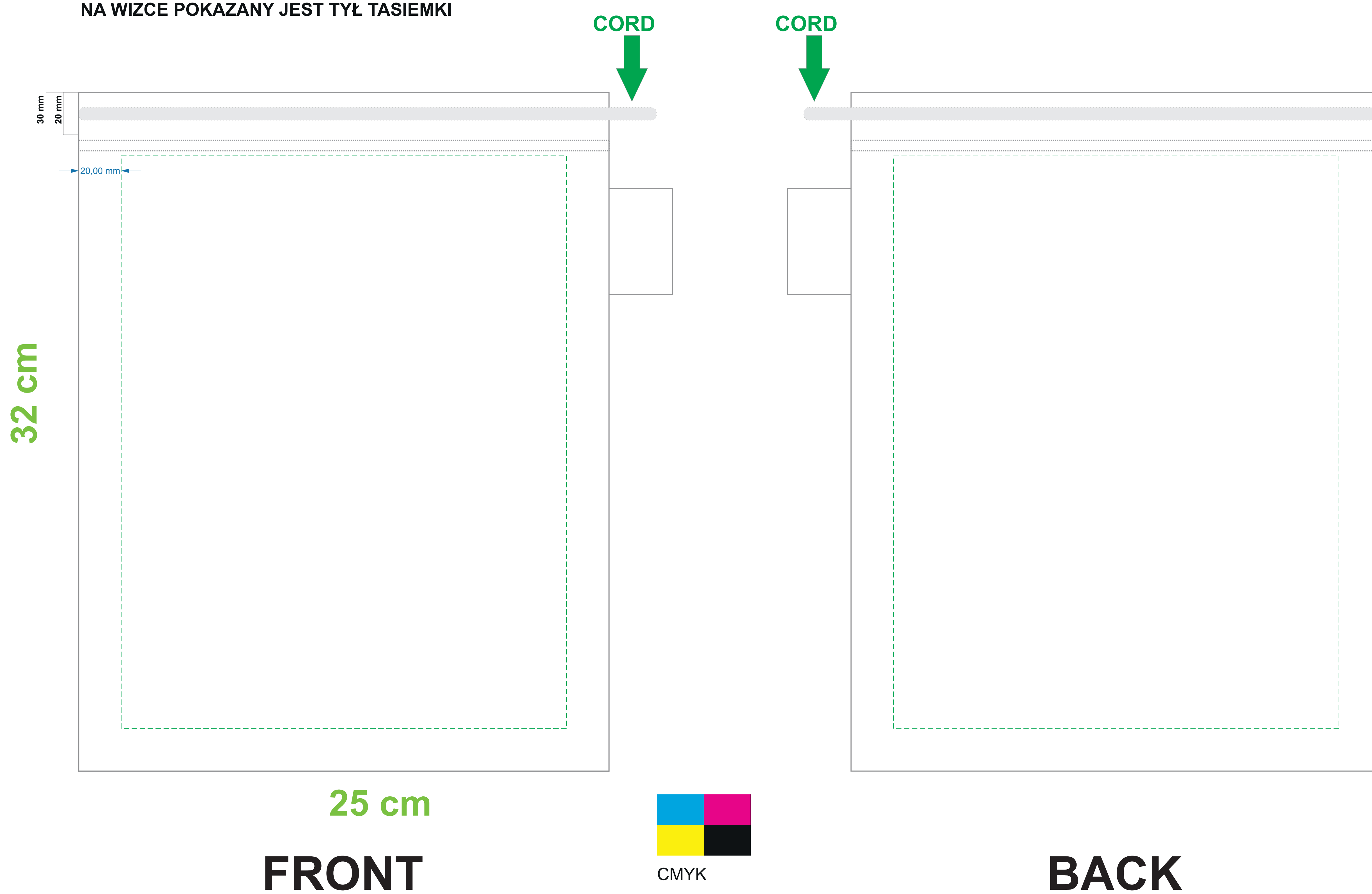


Template BottleBag Veggie 25x32cm

BLEED 560 x 410 mm
SAFE AREA PRINTING 210 x 270 mm

NA WIZCE POKAZANY JEST TYŁ TASIEMKI



To ensure the highest quality of service, please read carefully the following technical informations.

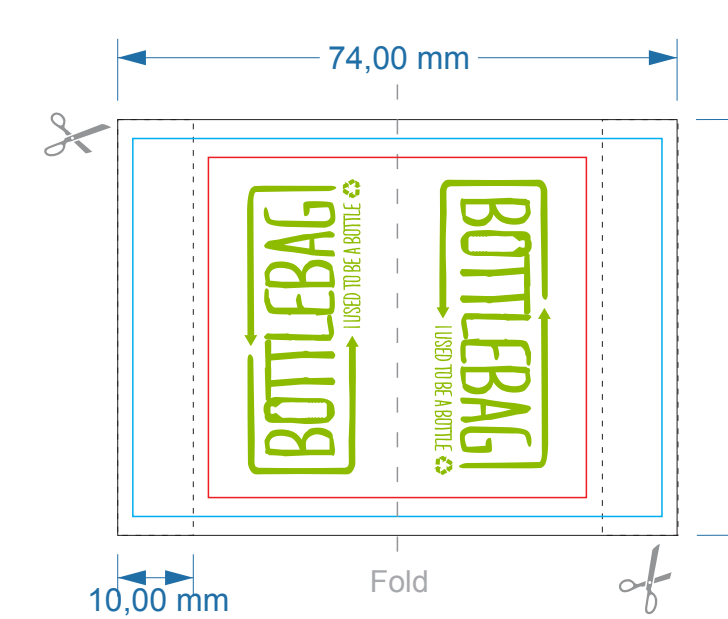
- 1) Tolerance of placing graphics on the material is +/- 10 mm
- 2) Despite many efforts, colours on fabrics will be always only similar to the colour of CMYK patterns
- 3) If it's necessary to match any particular CMYK colour we advise to make a colour sample prior to the final approval of the order
- 4) Any complaint about the colours will be taken under consideration only if the colour sample was ordered
- 5) Minimum readable size of fonts is 6 pt. Arial
- 6) Minimum resolution is 300 dpi
- 7) Minimum line thickness is 0,2 mm
- 8) File format: pdf, eps, ai, cdr
- 9) Due to the sublimation process dimensions may change up to 5% compared to the standard size
- 10) **All the graphics/logos outside the safe area may be cut or crossed by the stitching.**

PLACING THE ORDER OR ACCEPTING THIS PROJECT MEANS THAT YOU ARE FAMILIAR WITH PRESENTED TECHNICAL INFORMATION AND YOU AGREE WITH THEM



Side Label

70x50mm

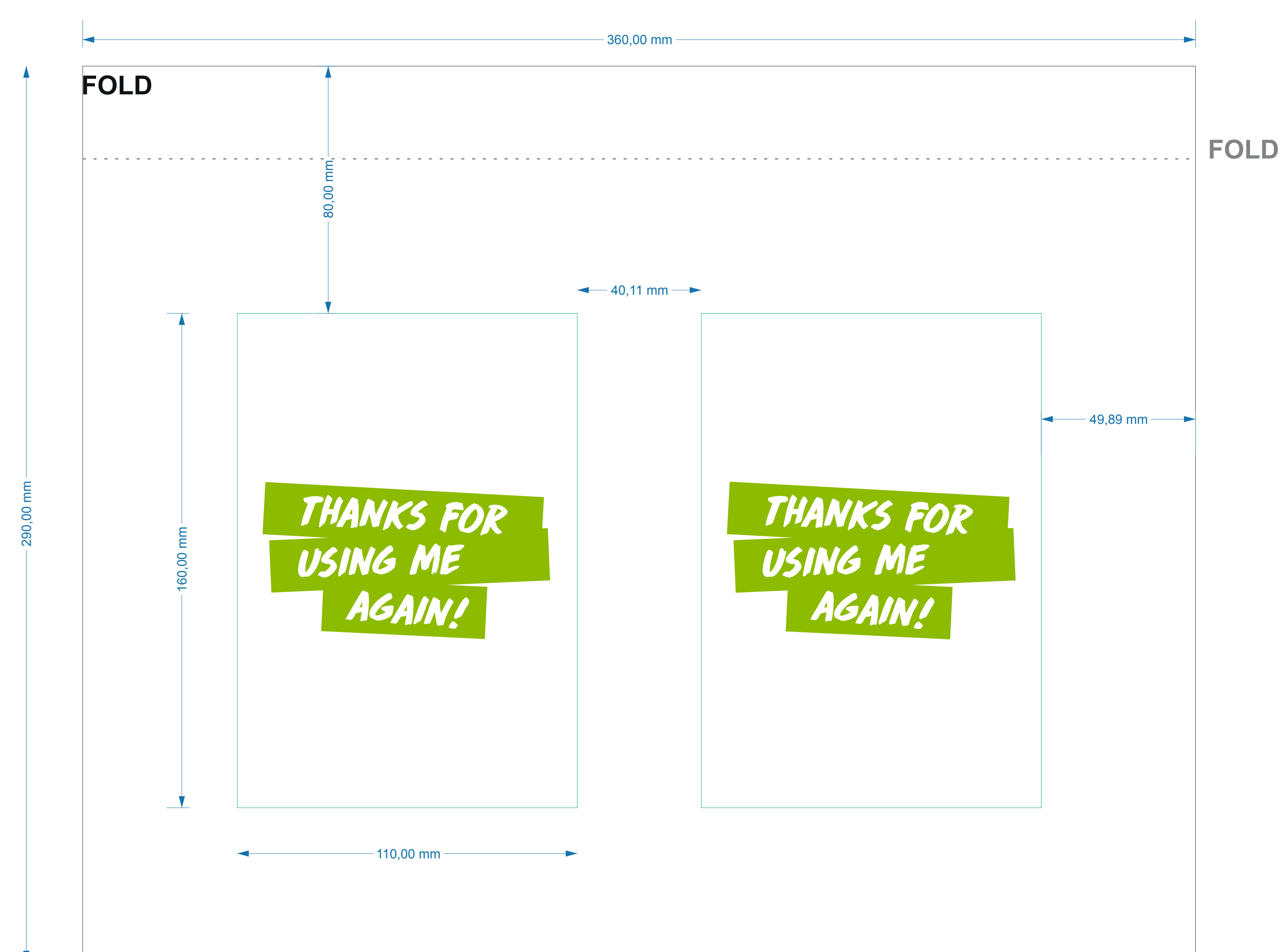
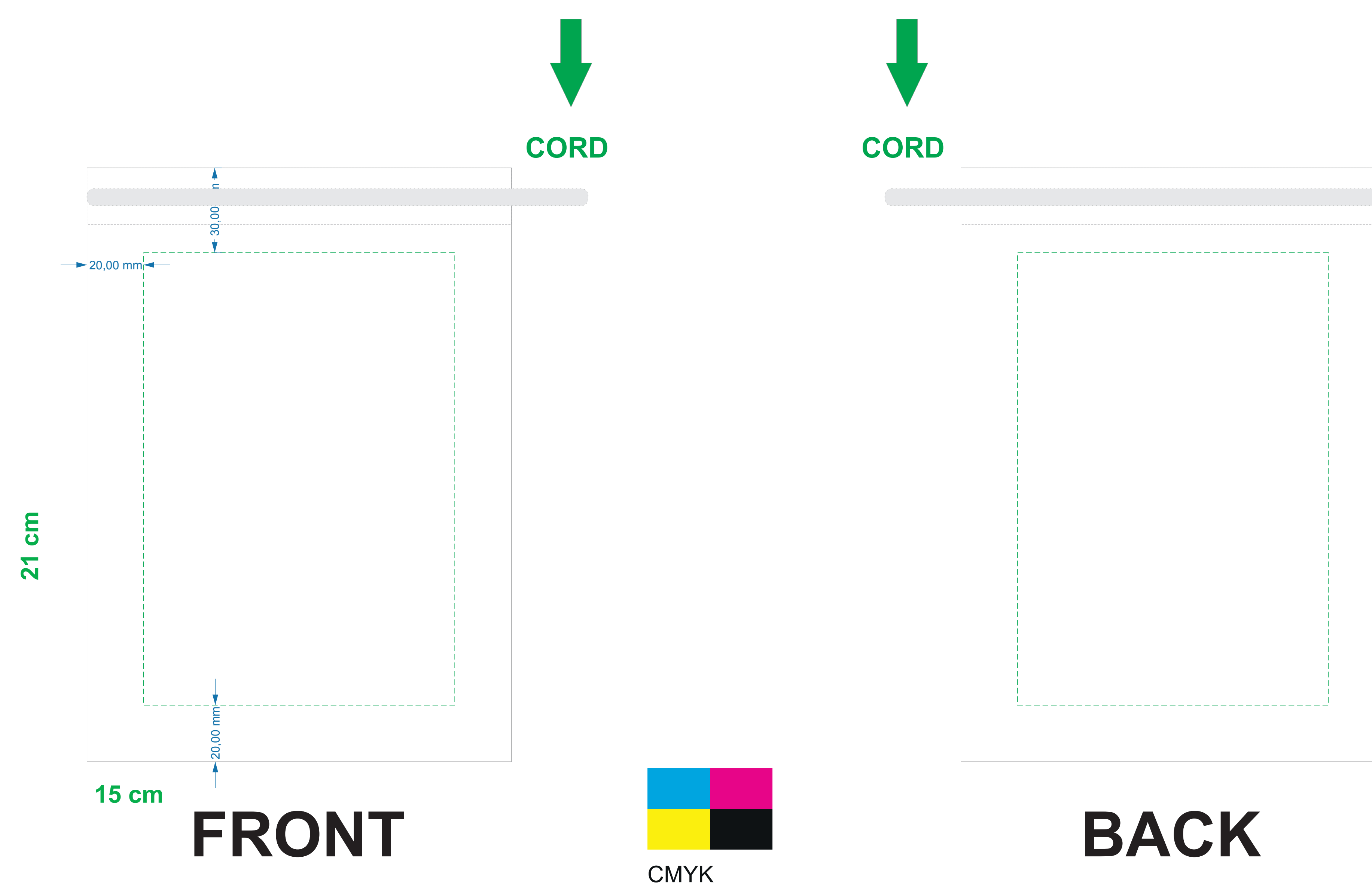


- SEWING
- CUT LINE 70x50mm
- SAFE AREA 50x40mm

Template BottleBag Veggie 15x21cm

SAFE AREA PRINTING 160 x 110 mm

BLEED 360 x 290 mm

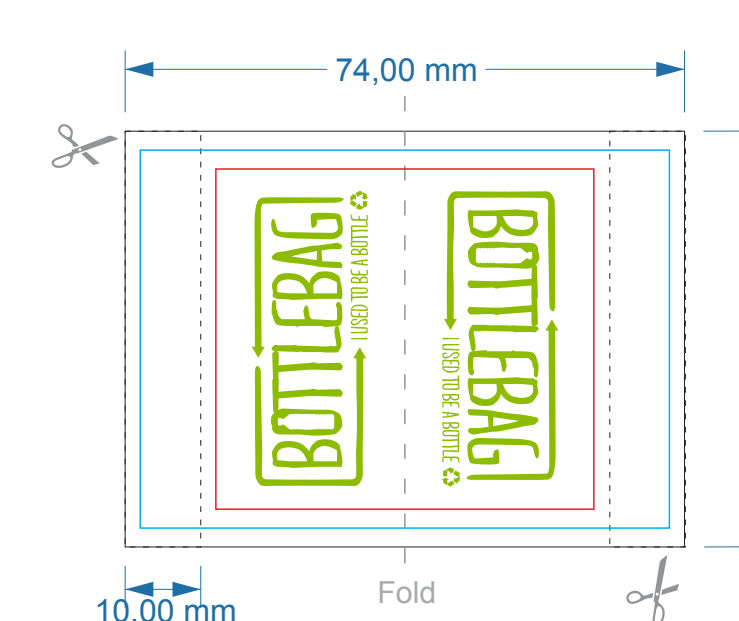


BACK

FRONT

Side Label

70x50mm



- SEWING
- CUT LINE 70x50mm
- SAFE AREA 50x40mm

To ensure the highest quality of service, please read carefully the following technical informations.

- 1) Tolerance of placing graphics on the material is +/- 10 mm
- 2) Despite many efforts, colours on fabrics will be always only similar to the colour of CMYK patterns
- 3) If it's necessary to match any particular CMYK colour we advise to make a colour sample prior to the final approval of the order
- 4) Any complaint about the colours will be taken under consideration only if the colour sample was ordered
- 5) Minimum readable size of fonts is 6 pt. Arial
- 6) Minimum resolution is 300 dpi
- 7) Minimum line thickness is 0,2 mm
- 8) File format: pdf, eps, ai, cdr
- 9) Due to the sublimation process dimensions may change up to 5% compared to the standard size
- 10) All the graphics/logos outside the safe area may be cut or crossed by the stitching.

PLACING THE ORDER OR ACCEPTING THIS PROJECT MEANS THAT YOU ARE FAMILIAR WITH PRESENTED TECHNICAL INFORMATION AND YOU AGREE WITH THEM



**THANKS FOR
USING ME
AGAIN!**

**I USED TO
BE A
BOTTLE**



The BottleBag is made of rPET

rPET is recycled PET (Polyethylene terephthalate), material which is used to make soda bottles. The material will be cleaned thoroughly, grinded and used as raw material for new products. The benefit of rPET is that it is less damaging for the environment.

rPET has:

- 90% less CO²-footprint than: Nylon
- 75% less CO²-footprint than: Polyester
- 50% less CO²-footprint than: Organic cotton



We start with the recycling of the PET bottles, which would otherwise end on the garbage-dump



The caps and labels will be removed before shredding the bottles



After shredding, the material will be woven into a fiber



The fiber will be reformed to rolls of fabric



This way, the newly made products find their origin in PET bottles