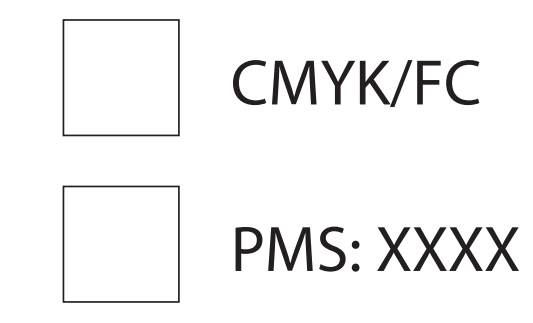
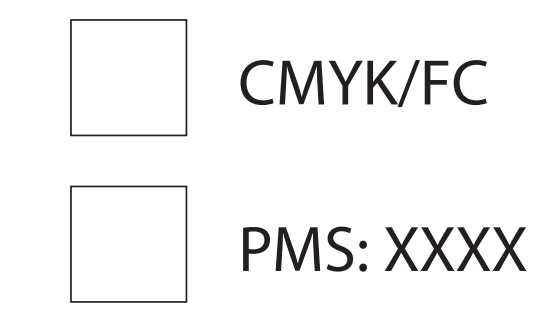


BottleBag Fashion Duo tone (English)

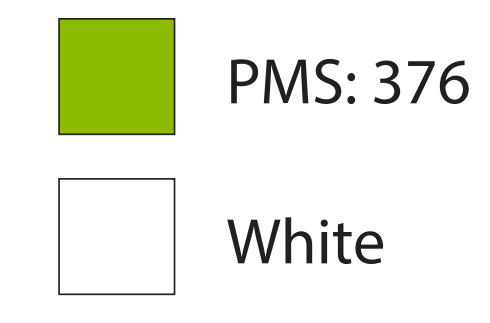
Bag colour



Print colour

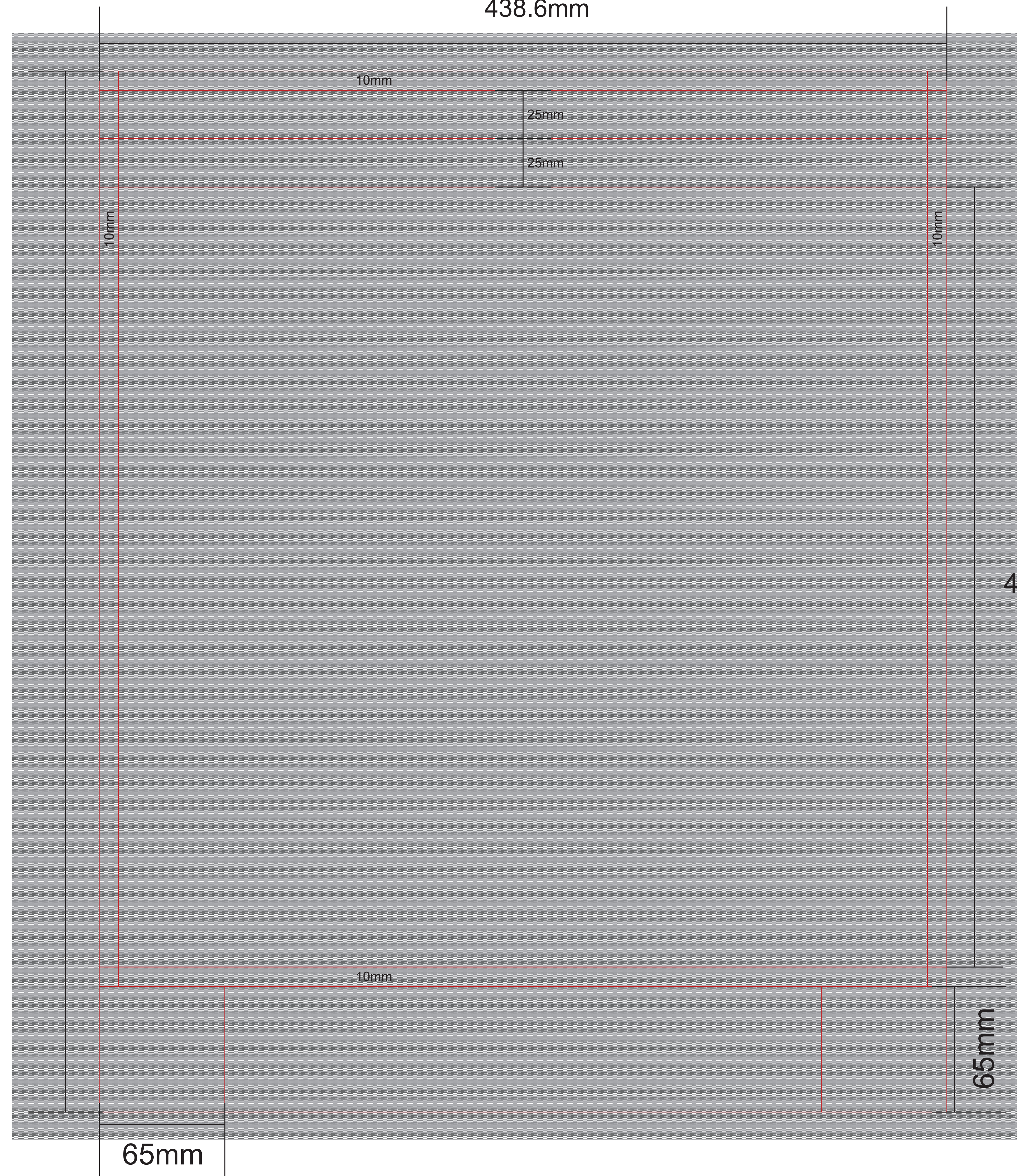


Side label colours:

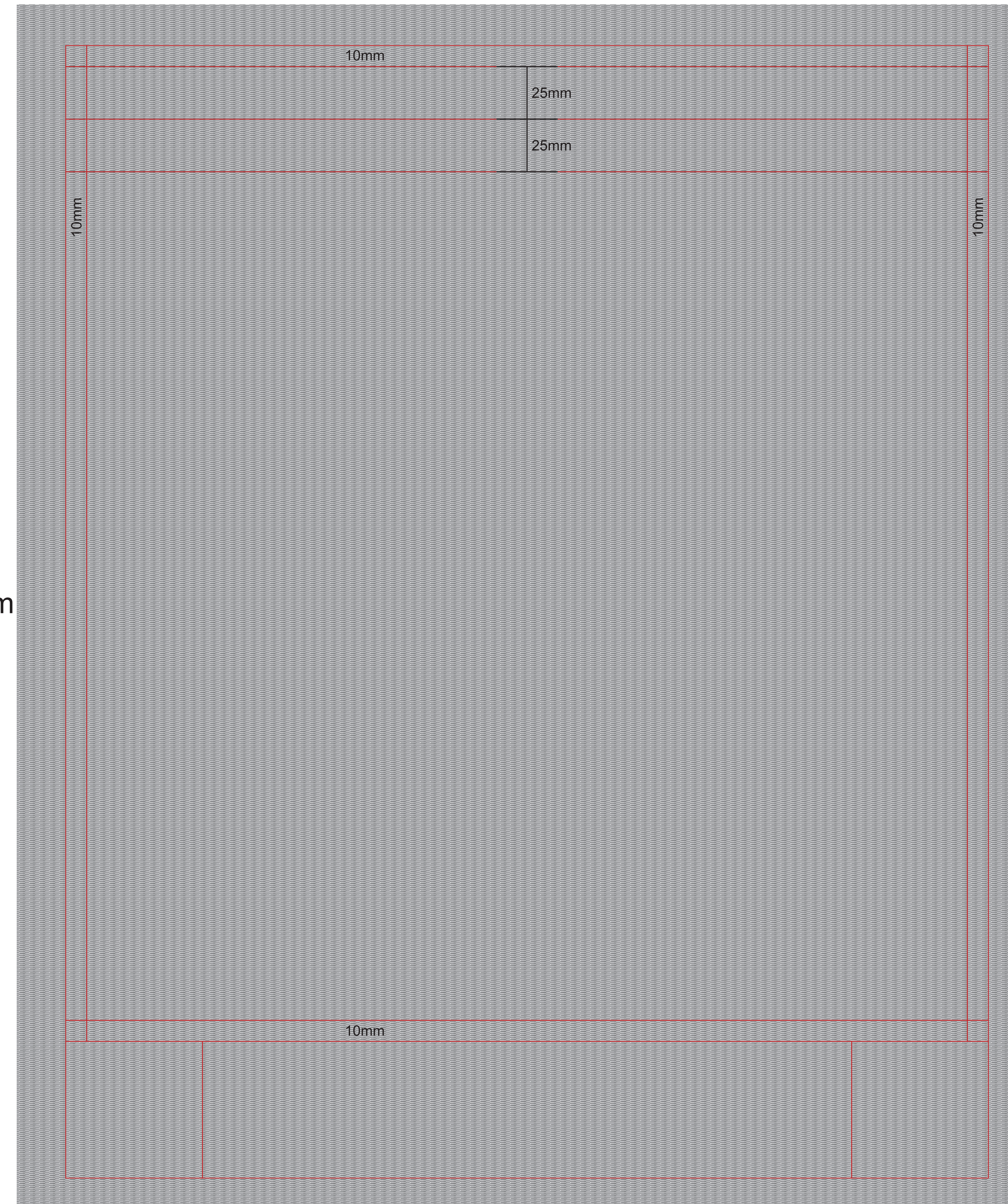


Front

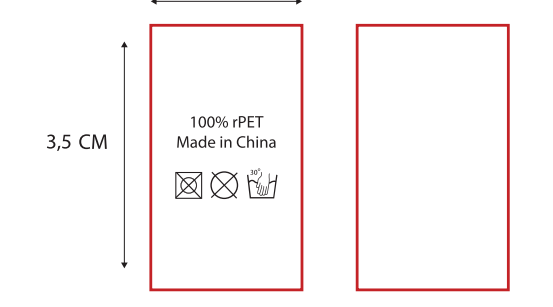
438.6mm



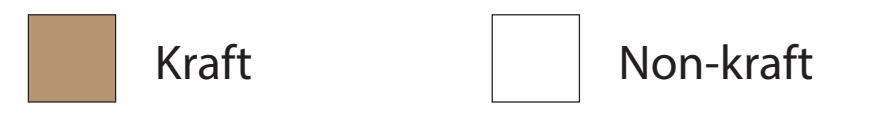
Back



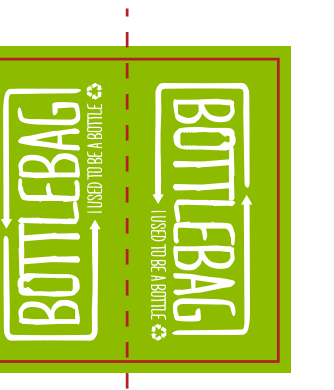
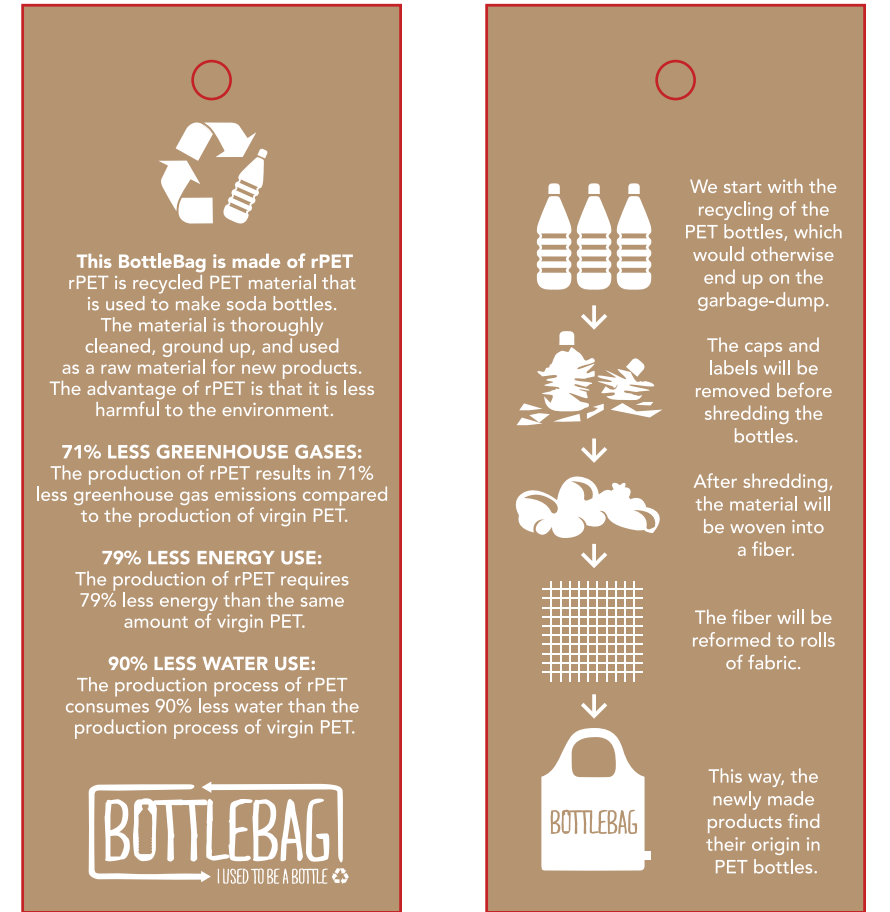
Care label
(inside)
2x3,5 cm



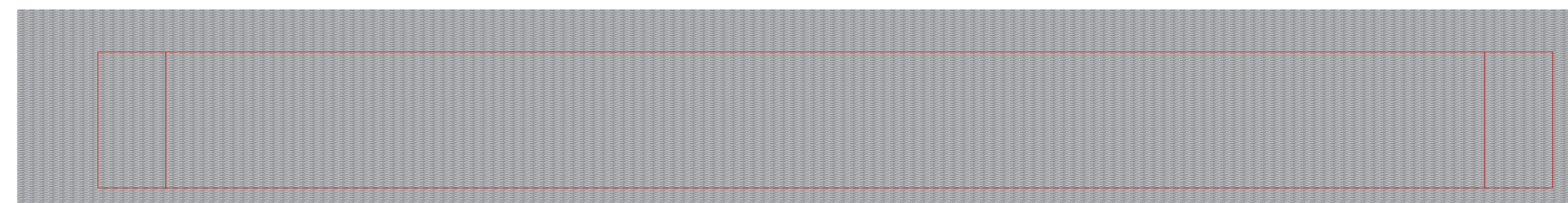
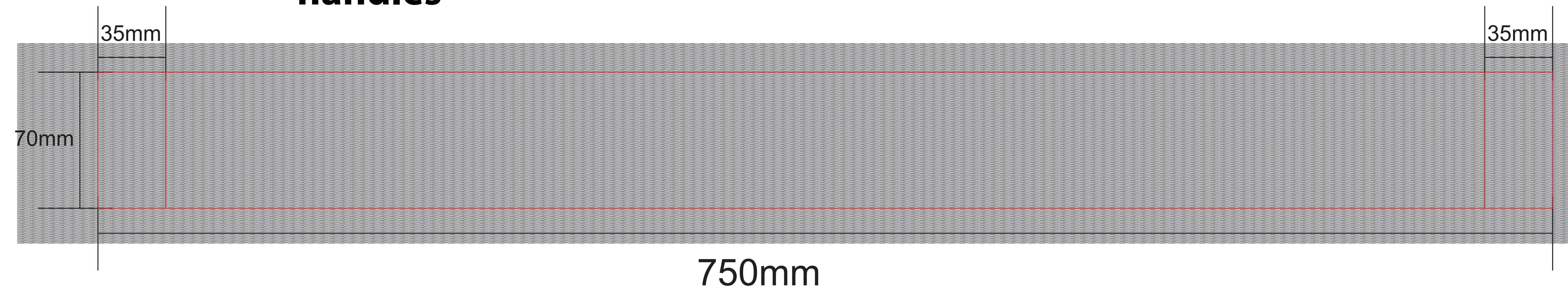
Material Hangtag BottleBag



Hangtag BottleBag
Size 5x12 cm



handles



A: Tolerance of placing graphics on the bottlebag is +/- 10 mm.
 B: We are not able to match Pantone color on CMYK artwork.
 C: Minimum readable size of fonts is 8 pt.
 D: Physical sample for approval is possible with acceptance of surcharge of € 50,00
 E: We are not able to match Pantone color on woven side label.
 F: Size of the bag will be 45 cm x 68 cm when assembled.