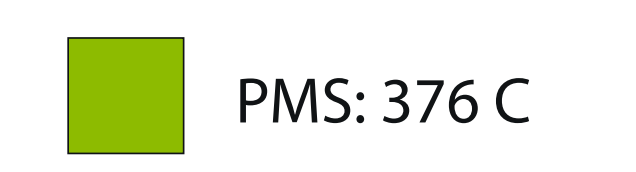


# BottleBag Pack City (English)

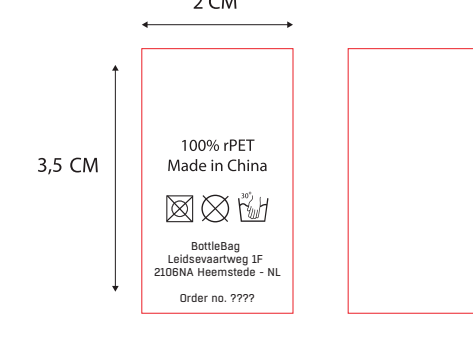
Print colour



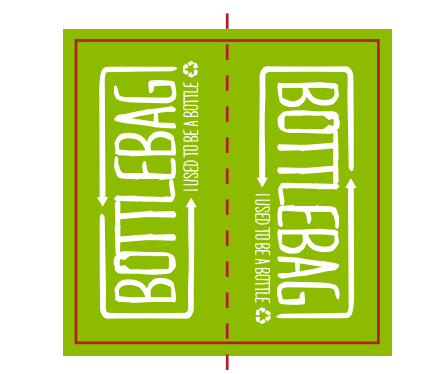
Side label colours:



Care label (inside)  
2x3,5 cm



Woven side label



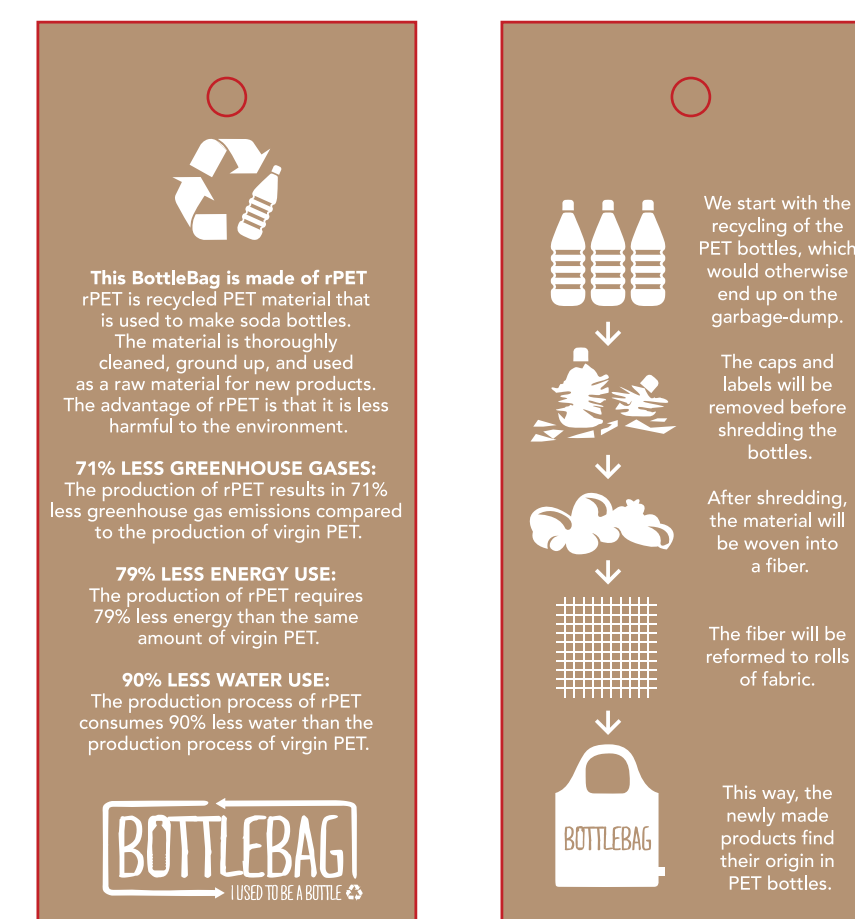
54,5 cm

45,5 cm

Material Hangtag BottleBag



Hangtag BottleBag  
Size 5x12 cm



A: Tolerance of placing graphics on the bottlebag is +/- 10 mm.  
 B: We are not able to match Pantone color on CMYK artwork.  
 C: Minimum readable size of fonts is 8 pt.  
 D: Physical sample for approval is possible with acceptance of surcharge of € 50,00  
 E: We are not able to match Pantone color on woven side label.  
 F: Size of the bag will be 45 cm x 68 cm when assembled.

34,5cm  
Back

34,5cm  
Front

78 cm

10 cm

7,8 cm

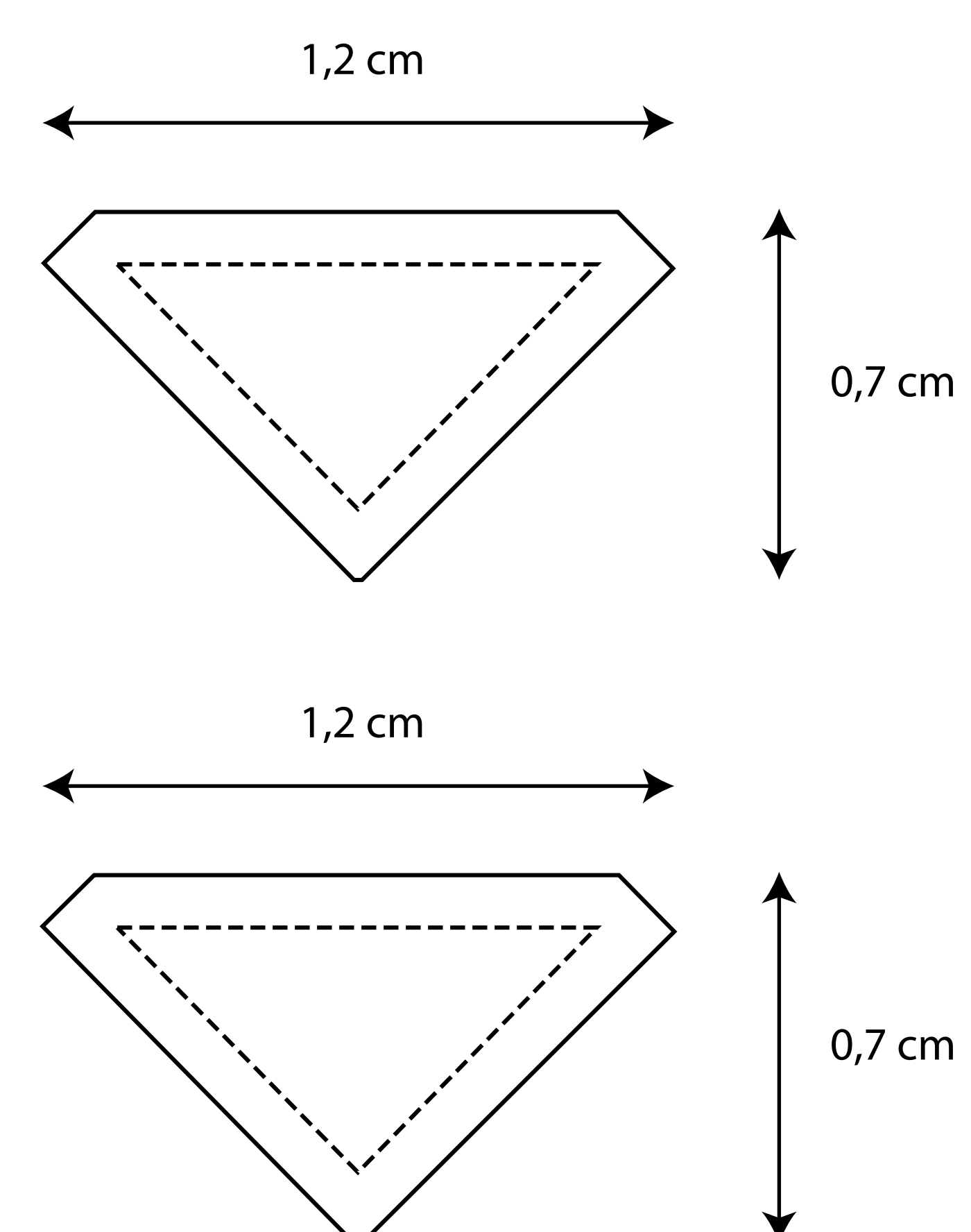
78,5 cm

Top panel

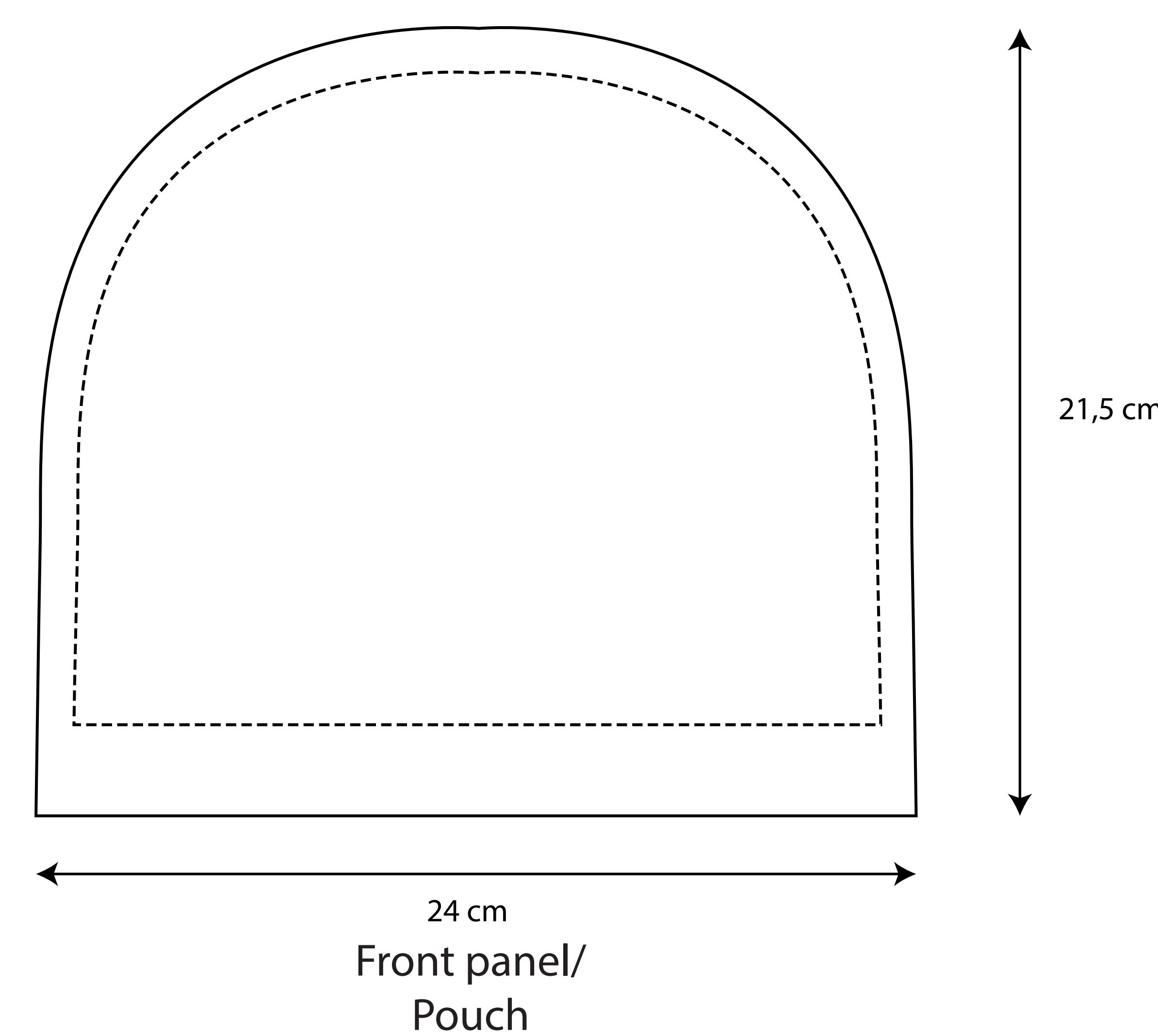
18 cm

14,5 cm

Side panel



Strap corners



24 cm  
Front panel/  
Pouch